

# ▀ Jed River Water Quality

**Elaine Moriarty**  
**ESR**

**[Elaine.moriarty@esr.cri.nz](mailto:Elaine.moriarty@esr.cri.nz)**



**MINISTRY OF BUSINESS,  
INNOVATION & EMPLOYMENT**  
HIKINA WHAKATUTUKI

# Micro-organisms

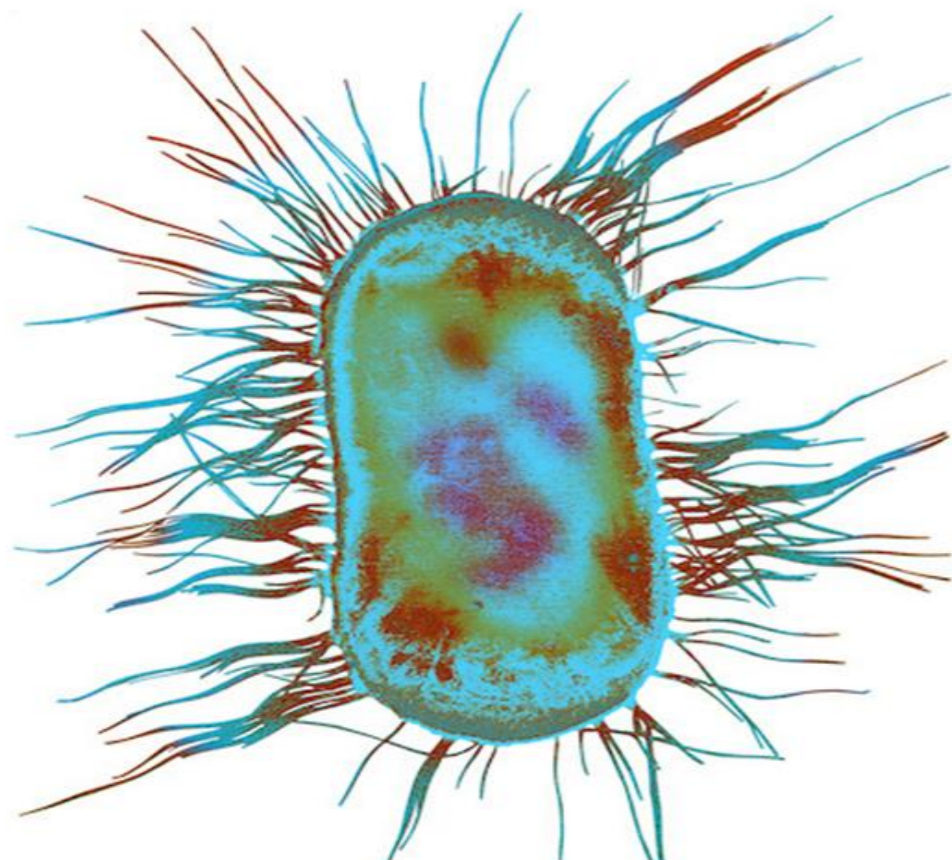
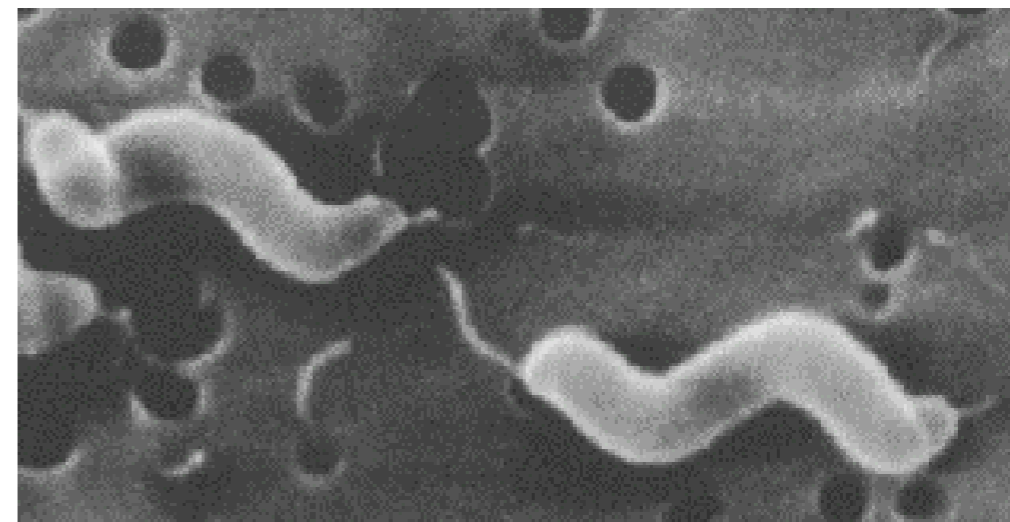
*Campylobacter*

*Salmonella*

*Cryptosporidium*

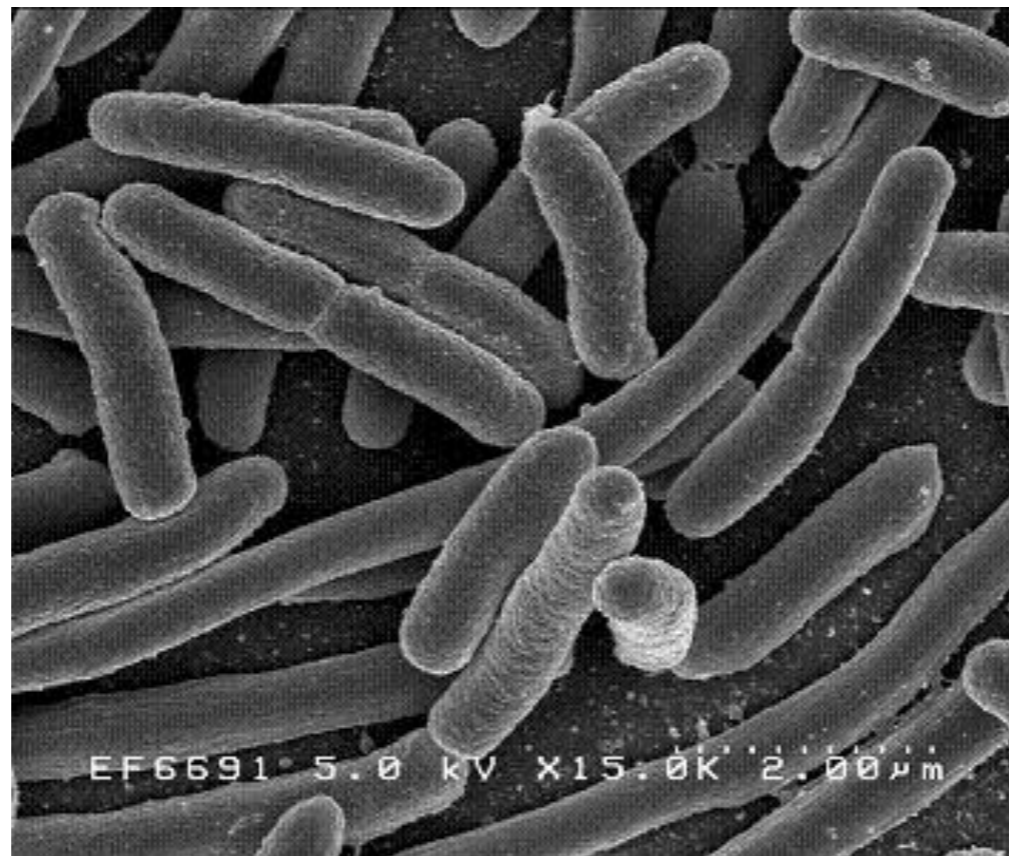
*Giardia*

*E. coli* O157



# Why study *E. coli*

- ▶ Present in high numbers in faeces
- ▶ Cheap and easy methods to test for it
- ▶ Indicates the likely presence of other pathogens





Who poohed  
on my head?









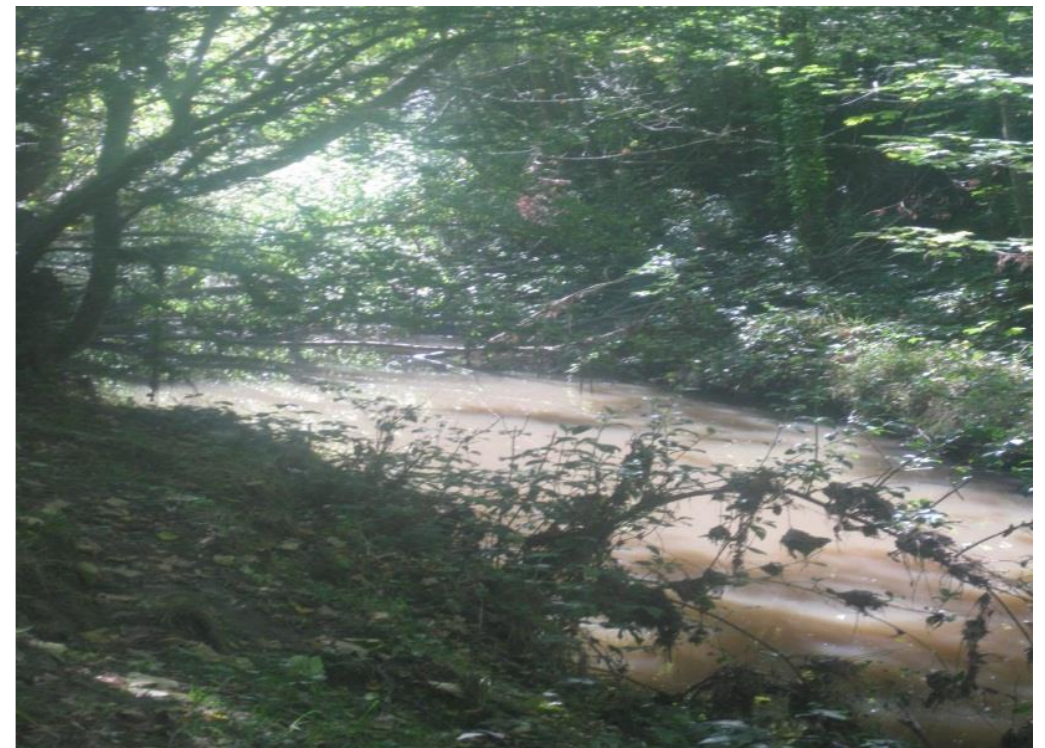
# Surface Runoff to Waterways



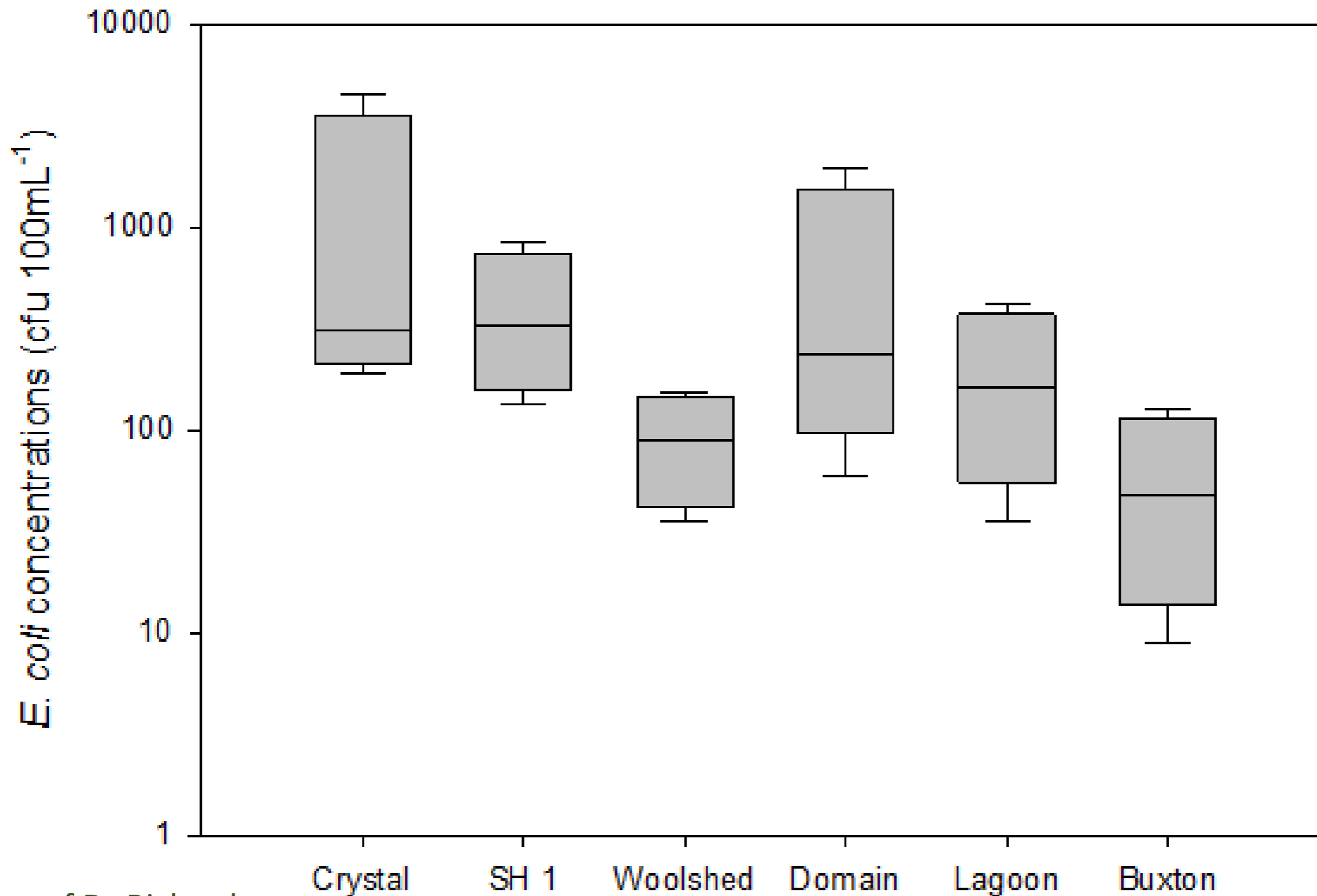


# Sampling Sites

- ▶ Crystal Brook – upstream of the input from the WWTP
- ▶ Woolshed Creek – close to the School
- ▶ Jed – SH1 Bridge
- ▶ Jed – Domain by the bridge
- ▶ Jed – Gore Bay, non-tidally influenced
- ▶ Buxton Creek – Close to the Swimming Hole



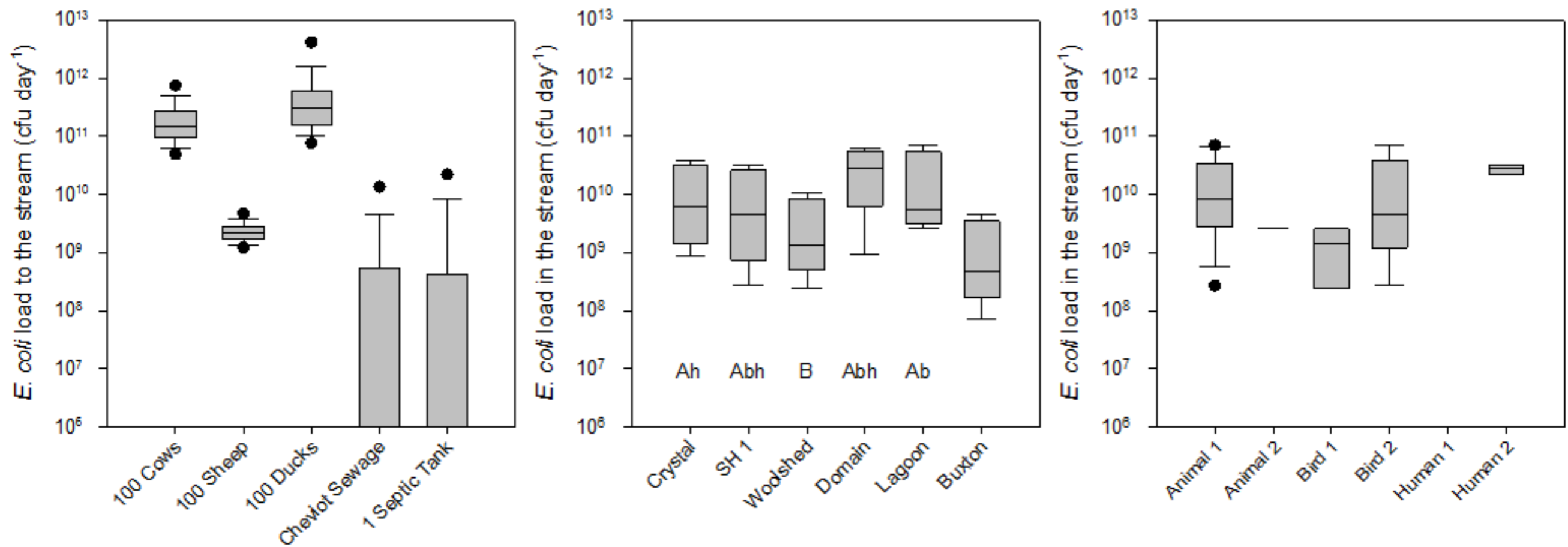
# Conc. of *E. coli* at the Sites



Courtesy of Dr Richard Muirhead AgResearch



# Stream Loads and Faecal Source Tracking



Sheep and Cows the most likely Sources of Faecal Microbes



# Discussion of Results

